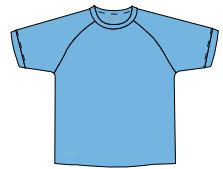
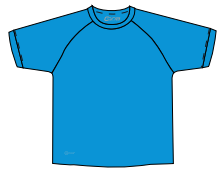


Trikot Herrenmodell: 6 Größen (XS-XXL), 23 Farben, einfarbig
Damenmodell: 5 Größen (34-42), 4 Farben: black, white, red, royalblue



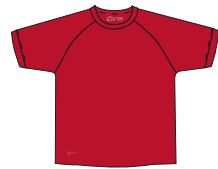
Clearblue
ca. Pantone 2915 C



Azurblue
ca. Pantone 2925 C



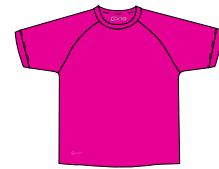
Navy
ca. Pantone 2965 C



Red
ca. Pantone 200 C



Bordeauxred
ca. Pantone 1955 C



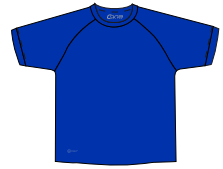
Magenta
ca. Pantone Rhodamine Red C



Violet
ca. Pantone 2593 C



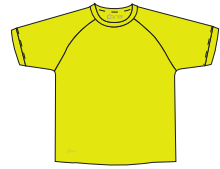
Bottlegreen
ca. Pantone 343 C



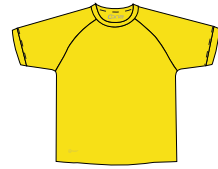
Royalblue
ca. Pantone 286 C



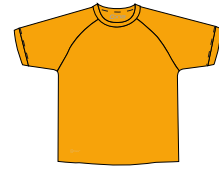
Inkblue
ca. Pantone 288 C



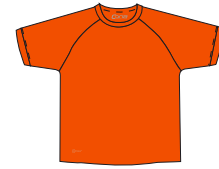
Neonyellow
ca. Pantone 395 C



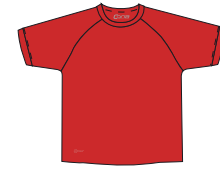
Sunyellow
ca. Pantone Yellow C



Goldyellow
ca. Pantone 137 C



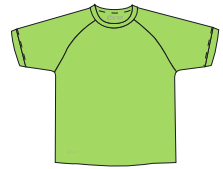
Orange
ca. Pantone 172 C



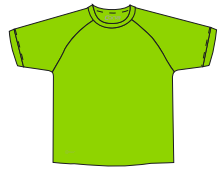
Lobsterred
ca. Pantone 1797 C



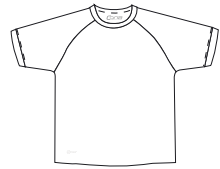
Green
ca. Pantone 347 C



Applegreen
ca. Pantone 367 C



Lime
ca. Pantone 375 C



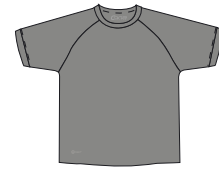
White



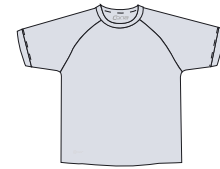
Anthrazit
ca. Pantone 433 C



Black



Coolgrey
ca. Pantone Cool Grey 9 C



Icegrey
ca. Pantone 656 C

Tikot Herrenmodell (bzw. unisex):
6 Größen (XS-XXL), zweifarbig, 6 Farbvarianten



white/royal blue



white/red



white/grey



royal blue/white



black/white



black/neonyellow



oben v.l.: bottlegreen, green, applegreen, lime, neonyellow, sunyellow, goldyellow, orange
mitte v.l.: icegray, white, violet, magenta, bordeauxred, red, lobsterred
unten v.l.: coolgrey, anthrazit, black, inkblue, navy, royalblue, azurblue, clearblue